

SCALE IN VIO OF AN INCH

1-800-345-7334

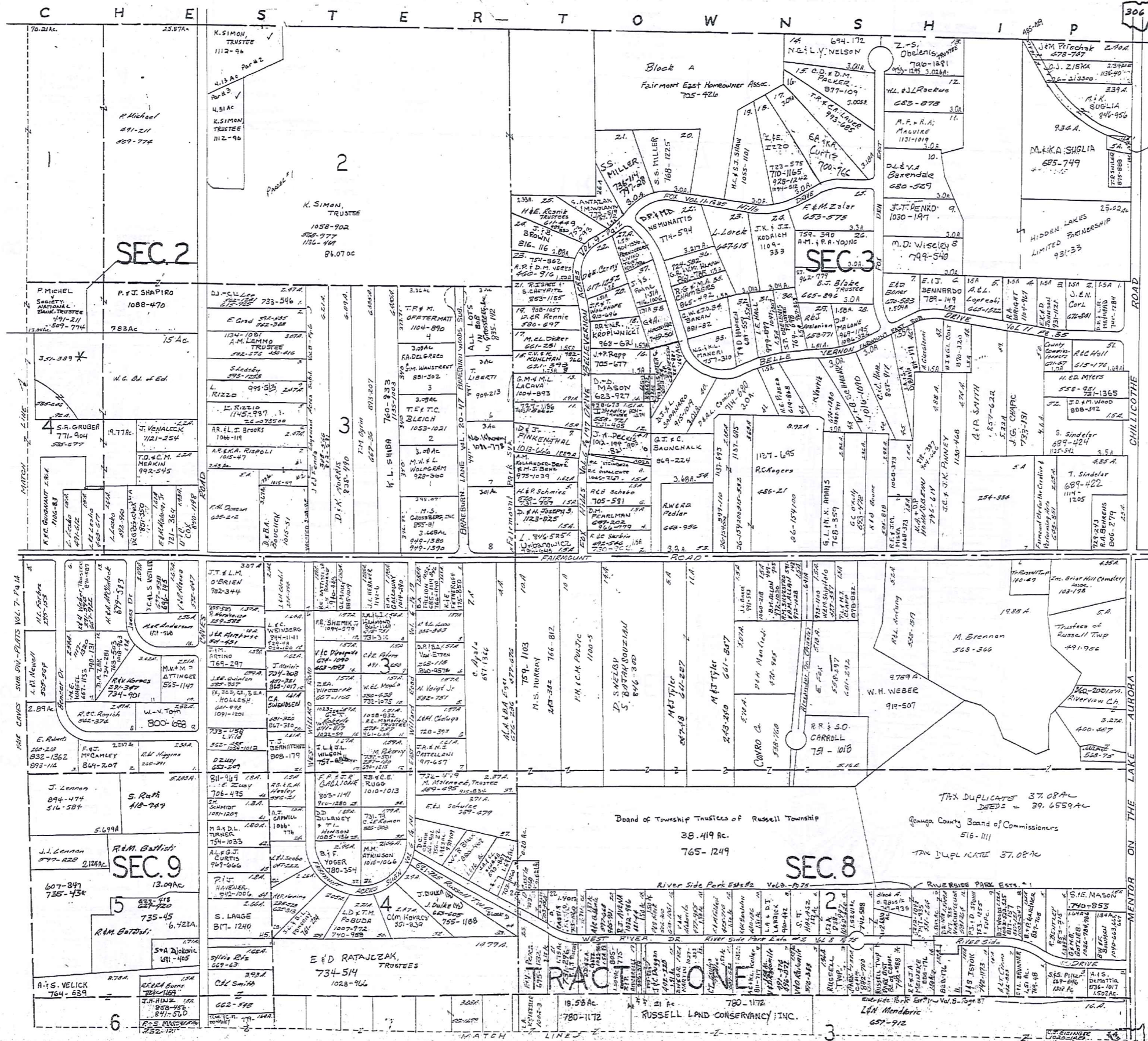
SCALE 1" = 300

* Inadequate description.

RELATIVE REPRESENTATION
JANUARY 1, 1998

A	B	C	D
E	F	G	H
I	J	K	L
M	N	O	P

RUSSELL A



SCALE IN 1/10 OF AN INCH

1-800-345-7334

SCALE 1" = 300'

* Inadequate description

JANUARY 6, 1998

A	B	C	D
E	F	G	H
I	J	K	L
M	N	O	P

RUSSELL-B

RELATIVE REPRESENTATION

Board of Township Trustees of Russell Township
38.419 Ac.
765-1249

Genesee County Board of Commissioners
516-1111

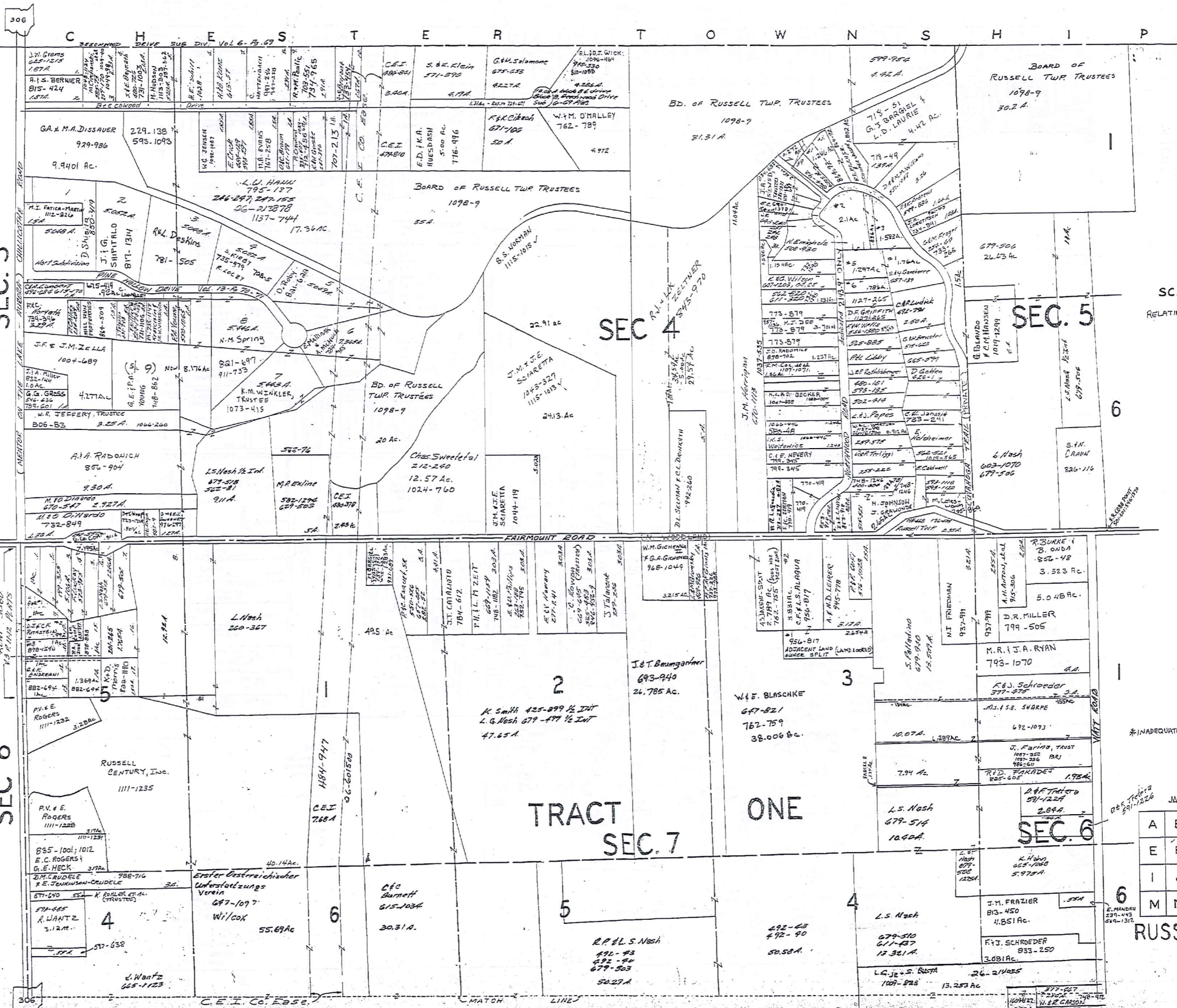
TAX DUPLICATES 37.08 AC
DEEDS = 39.6559 AC

River Side Park Est. Vols. 8-25

RIVER SIDE PARK ESTS.

RUSSELL LAND CONSERVANCY, INC.
780-1172

L.H. Mendicino
657-912



SCALE IN 1/10 OF AN INCH

1-800-345-7334

SCALE 1" = 300'
RELATIVE REPRESENTATION

JANUARY 1, 1998

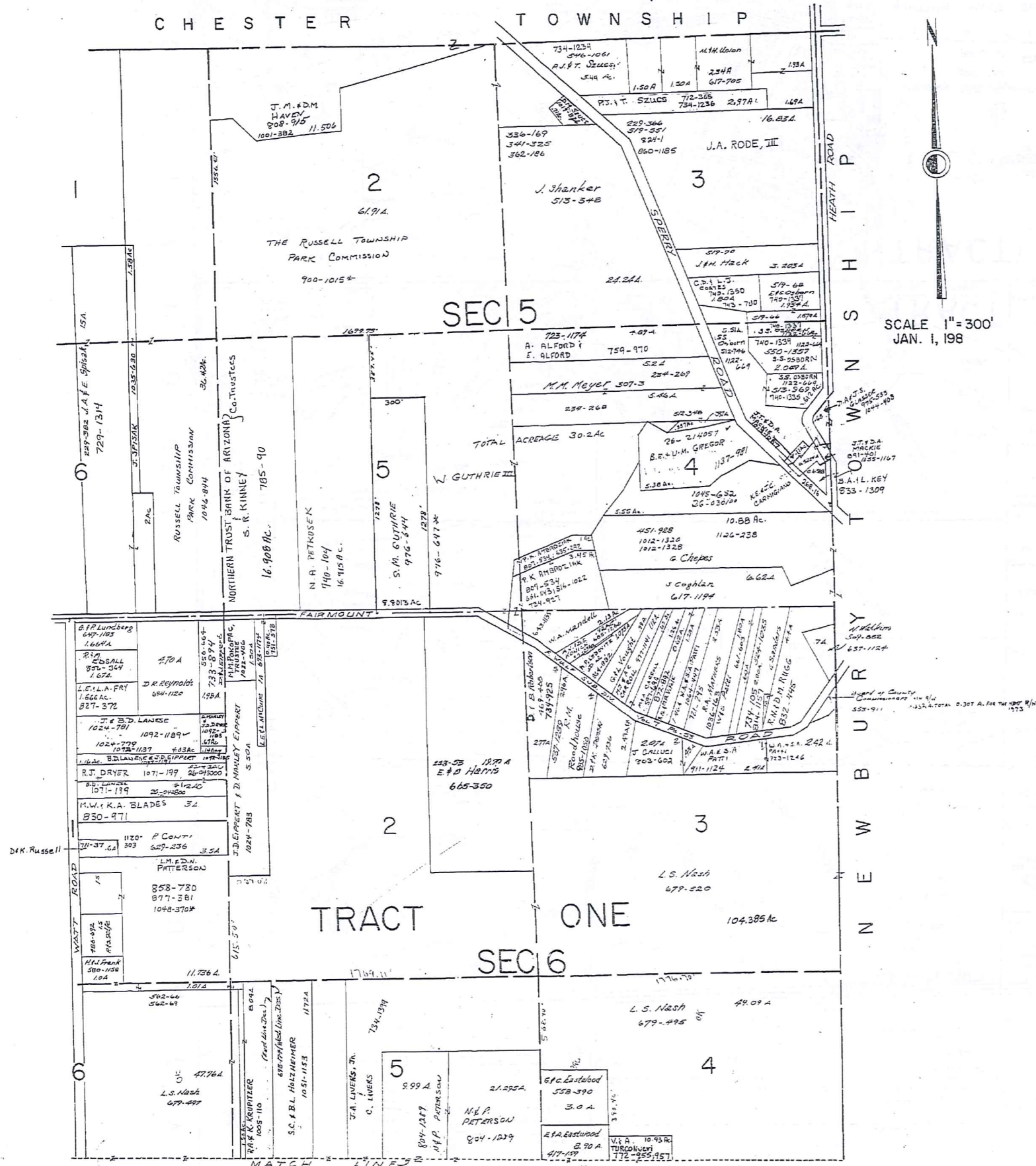
A	B	C	D
E	F	G	H
I	J	K	L
M	N	O	P

RUSSELL-C

*INADEQUATE DESCRIPTION

CHESTER TOWNSHIP

SCALE IN VIO OF AN INCH
1-800-345-7334



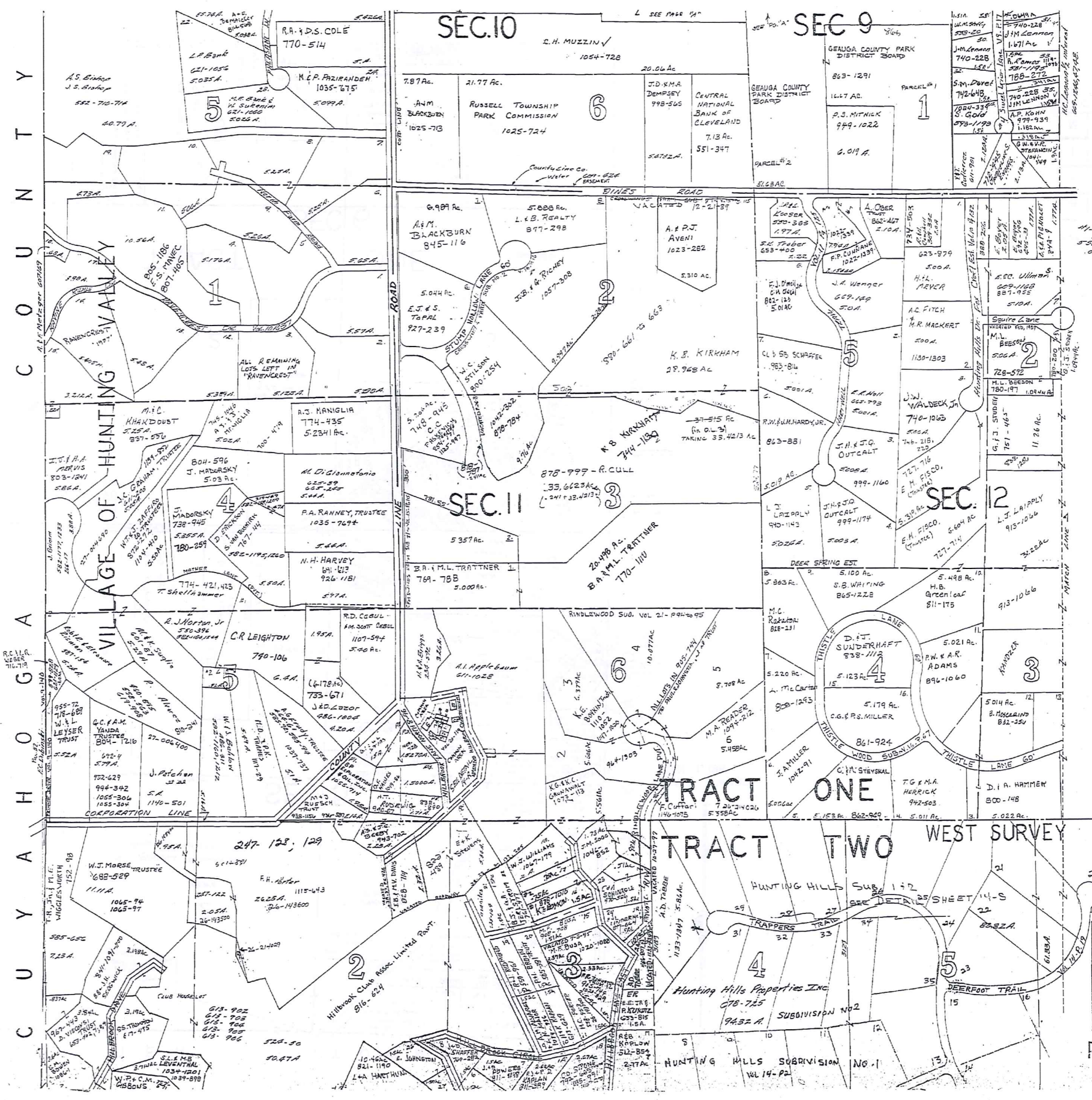
SCALE 1" = 300'
JAN. 1, 198

* Inadequate Description

JANUARY 1, 1998
RELATIVE REPRESENTATION

A	B	C	
E	F	G	H
I	J	K	L
M	N	O	P

RUSSELL-D



SCALE IN 1/10 OF AN INCH

1-800-345-7334



SCALE 1" = 300'

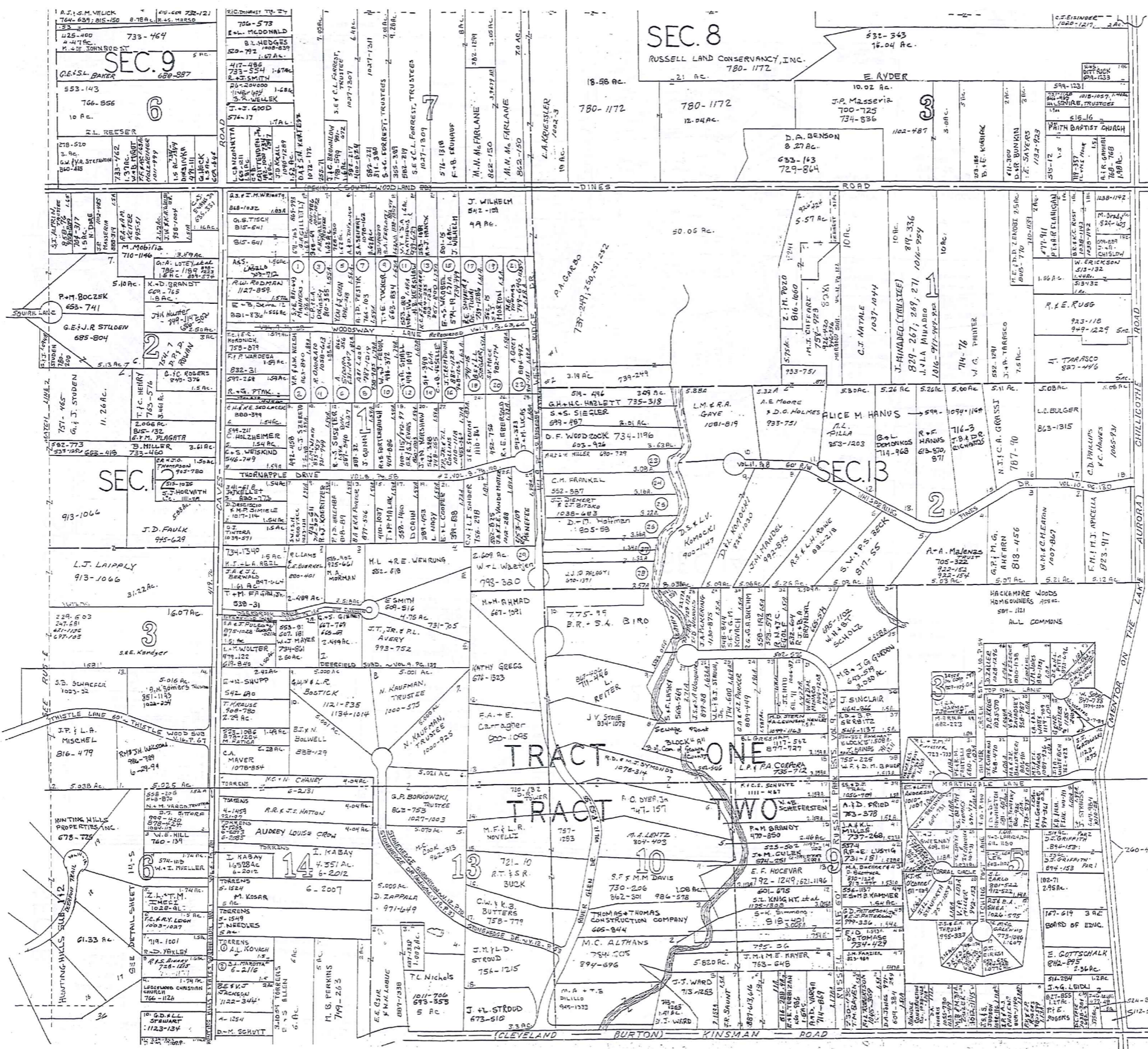
IN 1, 1998
RELATIVE REPRESENTATION

A	B	C	D
E	F	G	H
I	J	K	L
M	N	O	P

RUSSELL-E

SCALE 1"=300'

1-800-345-7334



SCALE 1"=300'

* inadequate description

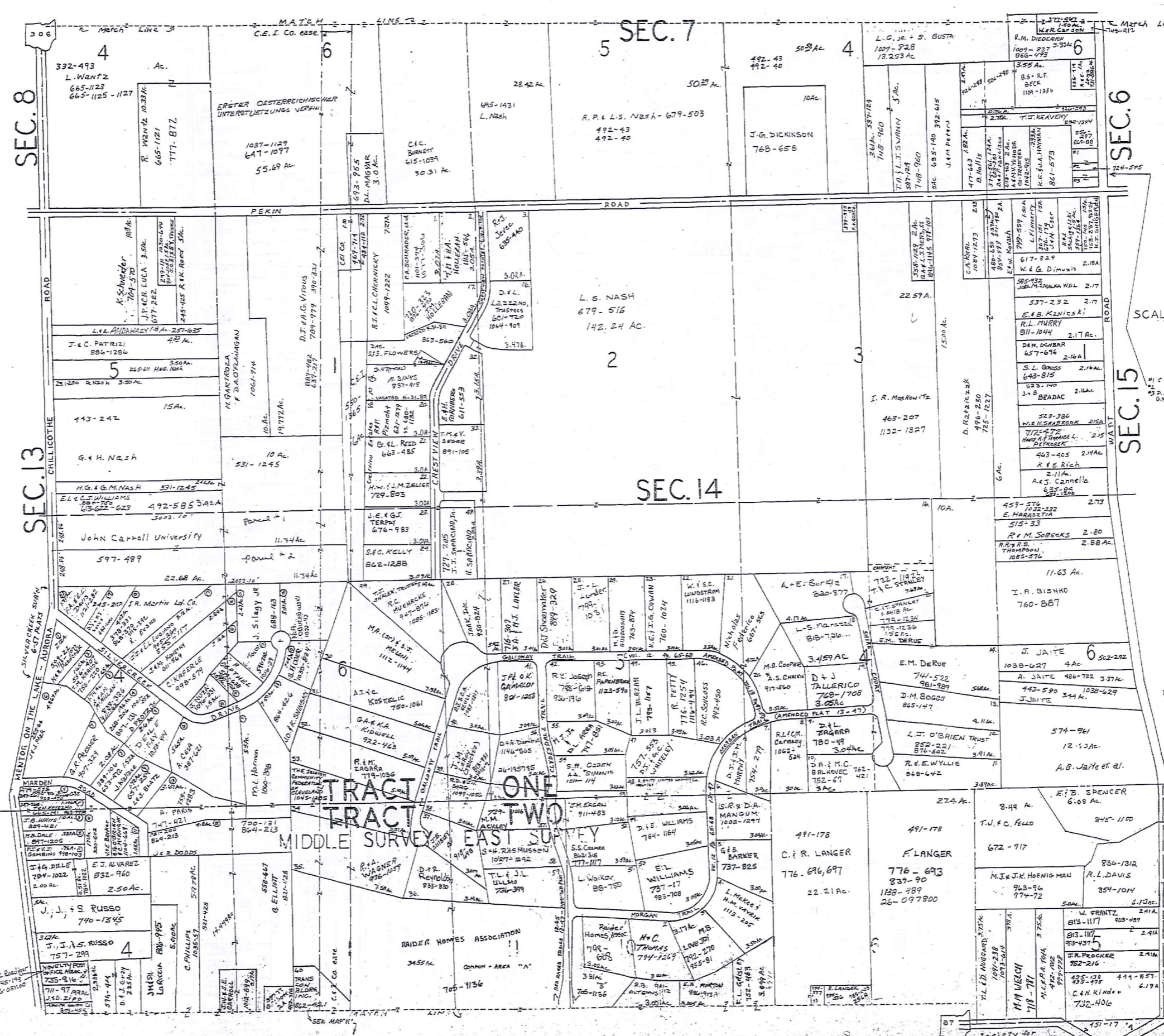
January 1, 1998
RELATIVE REPRESENTATION

A	B	C	D
E	F	G	H
I	J	K	L
M	N	O	P

RUSSELL - F

SCALE IN 1/10 OF AN INCH

1-800-345-7334



SCALE 1" = 300'

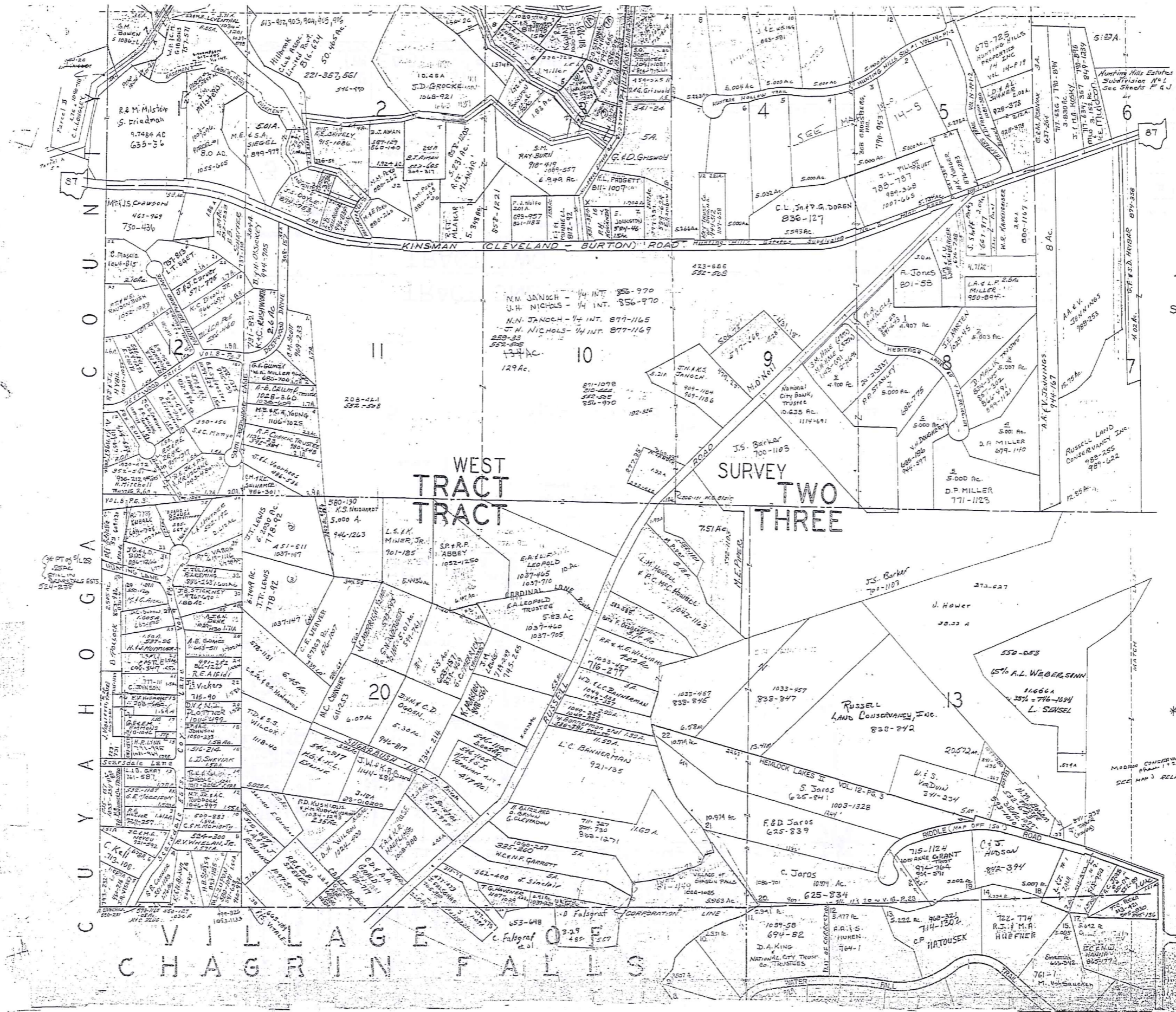
Indicates survey on file with tax map dep.

* Inadequate description

A	B	C	D
E	F	G	H
I	J	K	L
M	N	O	P

RUSSELL-G
RELATIVE REPRESENTATION
JANUARY 1, 1998

SCALE IN FEET OF AN INCH
1-000-345-7334



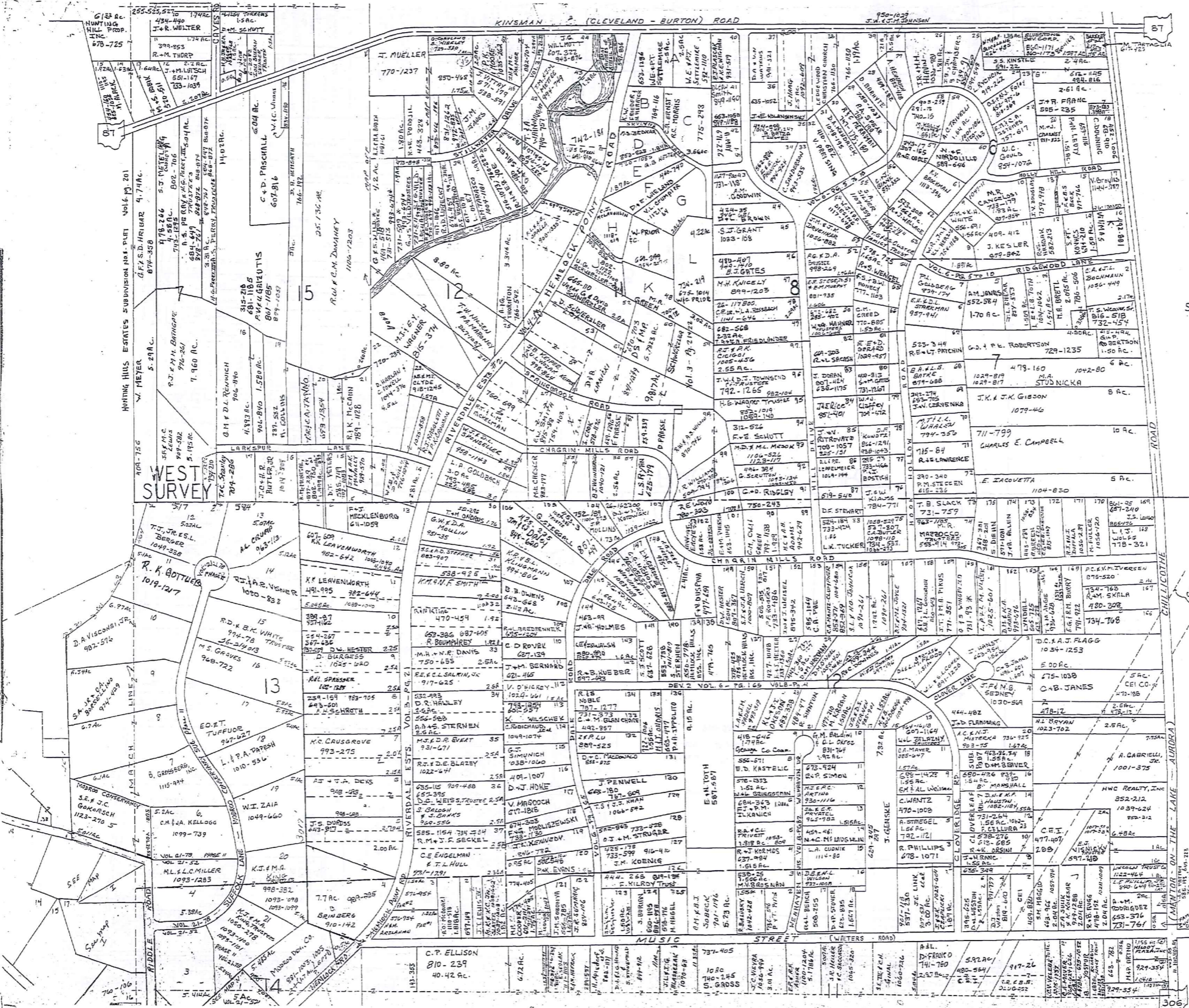
SCALE 1"=300'

A	B	C	D
E	F	G	H
I	J	K	L
M	N	O	P

* Inadequate description

MODERN CONSERVANCY FROM 1ST JANUARY, 1958
SEE MAP 3 RELATIVE REPRESENTATION

SCALE 1/4" = 100' INCH
1-800-345-7334



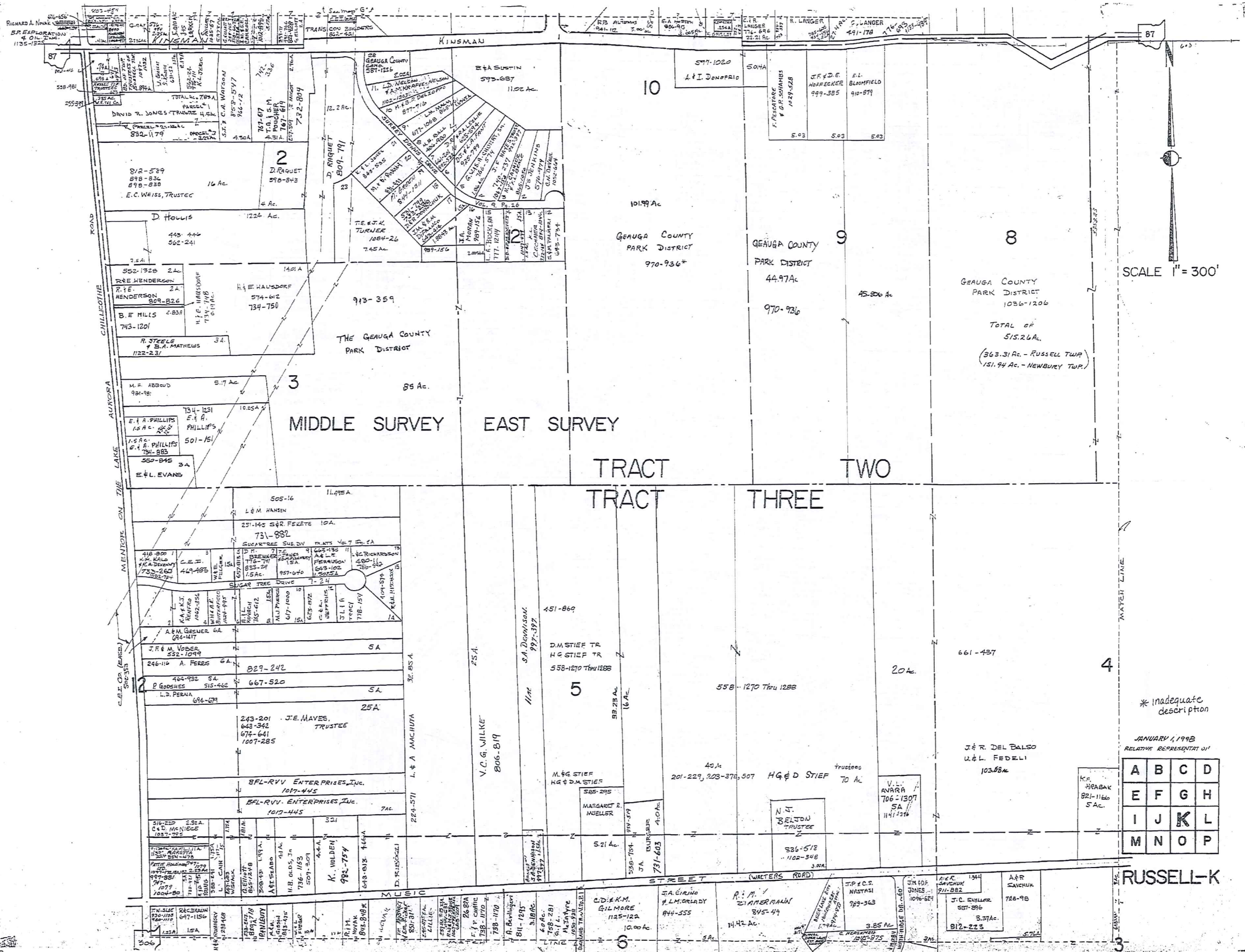
SCALE 1" = 300'

JANUARY 1, 1998
RELATIVE REPRESENTATION

A	B	C	D
E	F	G	H
I	J	K	L
M	N	O	P

RUSSELL-J

* Inadequate description



SCALE IN 1/10 OF AN INCH

1-800-345-7334

SCALE 1" = 300'

438

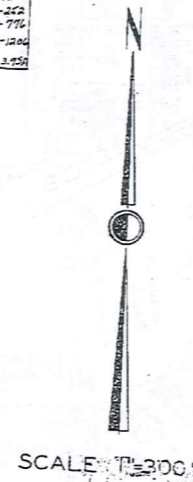
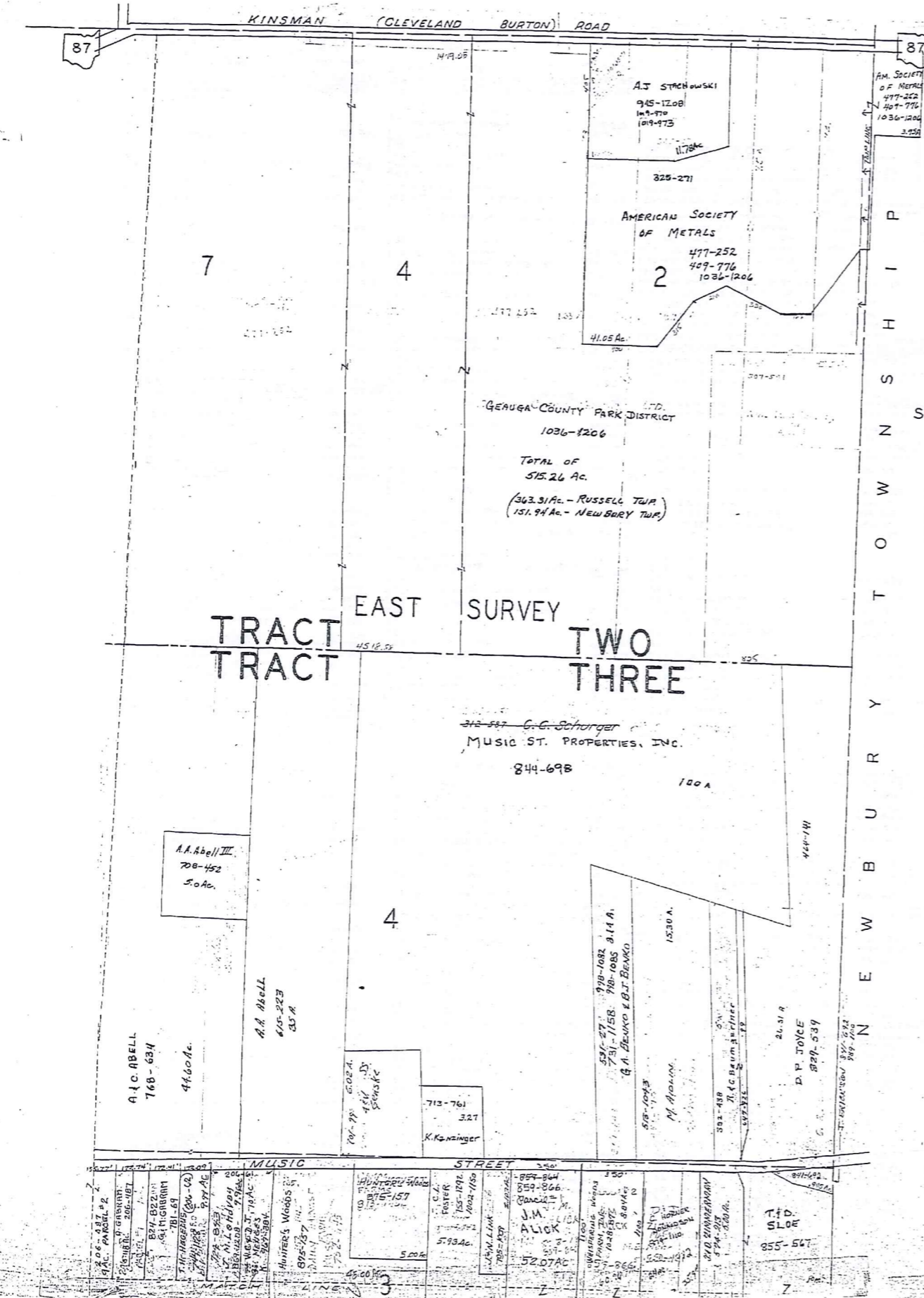
* inadequate description

JANUARY 1, 1998
RELATIVE REPRESENTATION

A	B	C	D
E	F	G	H
I	J	K	L
M	N	O	P

RUSSELL-K

SCALE IN 1/10 OF AN INCH
1-800-345-7334



* inadequate description

RELATIVE REPRESENTATION
JANUARY 1, 1998

A	B	C	D
E	F	G	H
I	J	K	L
M	N	O	P

RUSSELL - L

CHAGRIN HEIGHTS SUBDIVISION VOL. 3 - PG. 5-6 & 17-18 PLATS

SCALE IN 1/40 OF AN INCH

1-800-345-7333

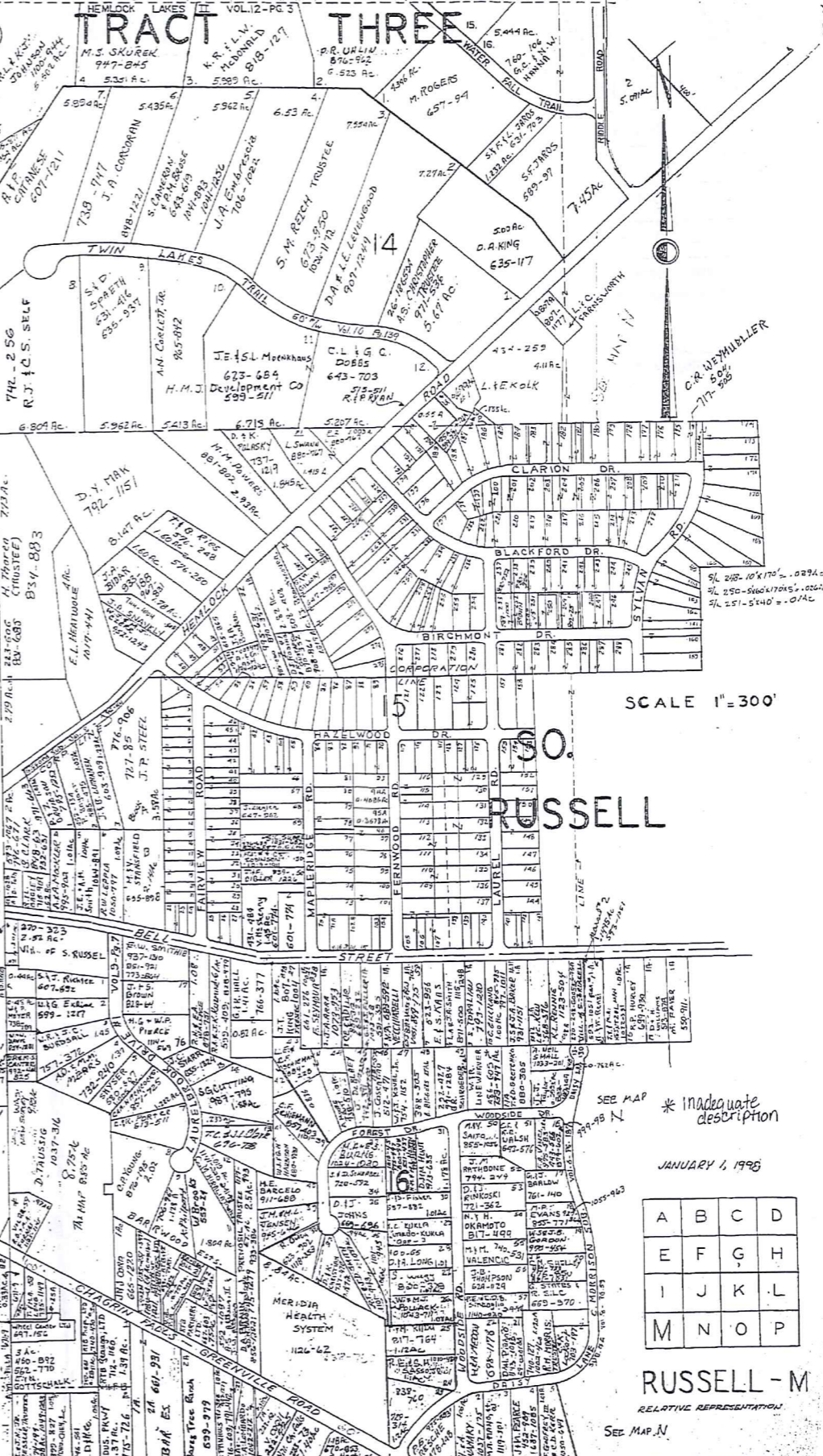
1	GERVAG COUNTY B.O.C. (2nd 1/2)	621-733
2	R.W. L.L. KONDAS	969-458
3	D. Man Fredi	454-826
4	"	"
5	"	"
6	E. Unkrich	615-239
7	"	"
8	E. Unkrich	500-839, 574-22
9	"	"
10	S. OLLAND	615-238
11	O. DIAMOND	574-575
12	"	"
13	"	"
14	M. ALSTROM	802-1227, 785-688
15	"	"
16	M. Richards	537-536
17	"	"
18	R. K. LOMBARDI	225-576, 701-780
19	"	"
20	N. SIMPSON	508-593
21	"	"
22	Hessner (and part of 23)	1047-593
23	E. Schlanga	315-193
24	"	"
25	"	"
26	F. & B. MAY	824-521
27	V. J. MILLER	237-593
28	H. P. K. Trustee	733-862, 578-414, 1057-276
29	"	"
30	S. MARCEAU	1047-782
31	"	"
32	P.C. Hoosier Trust UTA	312/1072, 738-201
33	"	"
34	J.A. & P.A. Szelis	887-659
35	"	"
36	"	"
37	J. TRUDICK + N.Y. of 5/13	229-530
38	R.H. GRIZZ	733-50, 494-43
39	M. K. W. NEBER + 1/4 40	1135-1185, 1009-1009
40	K.T. BISHOP, JR. Trustee	978-275
41	"	"
42	R. R. MOWLS	836-36
43	"	"
44	R.G. & M.L. COLE	1104-934
45	"	"

46	R.G. & M.L. COLE	1104-934
47	B.R. LABOVITZ	1128-1192
48	"	"
49	T.B. & V.A. MARINA	924-90
50	"	"
51	G.A. LASH	25-02550, 1144-1212, 25-02550
52	"	"
53	"	"
54	"	"
55	P.H. LOY	609-837
56	M.J. BIALOCK	839-671
57	W. WENDL	732-834, 245-22
58	M. TALLION	553-236
59	K. SCOVON	574-1250
60	R.K. VENCIL	667-685
61	R.C. & D. G. RENTON	1015-1160
62	M.A. ZUPPE	1034-1339
63	L.S. PAVELIC	1075-1172
64	"	"
65	G. CLOSE + 1/2 64	24-11, 403-23, 957-835
66	E.M. GUNAWANE	1024-925, 76-674
67	H.D. MERCER	270-366
68	R.T. & E. GLEZER	551-568
69	IND. B. HANCOCK, M. HAYNES	41-0130, 1147-772
70	T. SASAR	691-322
71	O. DIAMOND (W.K.P. 14)	776-867
72	B. (Sec. 102A)	"
73	L.C. GREEN	997-1013
74	W.R. EDWARDS	751-921, 313
75	C.W. HUDSON	721-958
76	R.W. KOOSAR	856-101
77	J.H. BEARD + 1/2 75	814-1141
78	B.A. RAYMOND + 1/2 75	854-873
79	"	"
80	M.S. SARGER	724-1559
81	F.G. & M.J. MILLER	815-445, 623-246
82	M.J. TOORHILL	889-535, 527-843
83	C. FERRETTI, TRUSTEE	724-1559
84	J.D. SHUTTS	553-114, 1052
85	J. & M. WILSON	1052-1111
86	G.M. LYVILLE	957-944
87	S.A. POULET	1048-1131
88	D.T. CONLEY	629-538
89	R. VINCE	1070-966
90	F. VAN LENTE	687-64

CHAGRIN FALLS

106	A.H. OWEN	118-1006, 1073-755
107	S. SCHMIDT & S. SCHMIDT	378-455, 633-197
108	J. Nelson	1053-974
109	S. SINDERS (and part of 110)	922-445
110	J. G. BRYNE + 1/2 135	718-809
111	R.N.K. TROPE	501-385
112	N. JOHNSON, K. ROGERS (CO-TRUSTEES)	822-549, 835-559
113	"	"
114	J. & J. ALMASHI	788-183
115	J. & M. VENTURA	980-1242, 479-856, 888
116	M.C. JANTZ	776-986
117	B.S. Olin	1144-1018
118	J. KENNETH HOWELL	657-422
119	"	"
120	F. MARZ & J. MARZ	876-382, 362-333
121	R.A. BULLY	1144-331
122	C.A. & M. LICHTY	859-1181
123	H.C. Rankin	785-503
124	L.M. AHLMAN	1045-889
125	"	"
126	J. & F. C. WOODHASTON-WHITE	1581-1235
127	D.V. BARRISGALL	974-22, 285-172
128	T. & A.M. FARJAD	1035-664
129	T. & A.M. FARJAD	1035-664
130	S. KRIDER	378-273
131	S.L. LYON + 1/2 161	1130-1139
132	P.S. & K.Z. DEUTSCH	980-128
133	"	"
134	"	"
135	"	"
136	"	"
137	"	"
138	"	"
139	"	"
140	"	"
141	"	"
142	"	"
143	"	"
144	"	"
145	"	"
146	"	"
147	"	"
148	"	"
149	"	"
150	"	"
151	"	"
152	"	"
153	"	"
154	"	"
155	"	"
156	"	"
157	"	"
158	"	"
159	"	"
160	"	"
161	"	"
162	"	"
163	"	"
164	"	"
165	"	"
166	"	"
167	"	"
168	"	"
169	"	"
170	"	"
171	"	"
172	"	"
173	"	"
174	"	"
175	"	"
176	"	"
177	"	"
178	"	"
179	"	"
180	"	"
181	"	"
182	"	"
183	"	"
184	"	"
185	"	"
186	"	"
187	"	"
188	"	"
189	"	"
190	"	"
191	"	"
192	"	"
193	"	"
194	"	"
195	"	"

256	J.K. JOHNSON + 1/2 257	812-648
257	T. & M. SHAWLEY + 1/2 258	1008-104
258	F.L. KING	706-1070
259	F.L. KING	706-1070
260	F.L. KING	706-1070
261	F.L. KING	706-1070
262	F.L. KING	706-1070
263	F.L. KING	706-1070
264	F.L. KING	706-1070
265	F.L. KING	706-1070
266	F.L. KING	706-1070
267	F.L. KING	706-1070
268	F.L. KING	706-1070
269	F.L. KING	706-1070
270	F.L. KING	706-1070
271	F.L. KING	706-1070
272	F.L. KING	706-1070
273	F.L. KING	706-1070
274	F.L. KING	706-1070
275	F.L. KING	706-1070
276	F.L. KING	706-1070
277	F.L. KING	706-1070
278	F.L. KING	706-1070
279	F.L. KING	706-1070
280	F.L. KING	706-1070
281	F.L. KING	706-1070
282	F.L. KING	706-1070
283	F.L. KING	706-1070
284	F.L. KING	706-1070
285	F.L. KING	706-1070
286	F.L. KING	706-1070
287	F.L. KING	706-1070
288	F.L. KING	706-1070
289	F.L. KING	706-1070
290	F.L. KING	706-1070
291	F.L. KING	706-1070
292	F.L. KING	706-1070
293	F.L. KING	706-1070
294	F.L. KING	706-1070
295	F.L. KING	706-1070
296	F.L. KING	706-1070
297	F.L. KING	706-1070
298	F.L. KING	706-1070
299	F.L. KING	706-1070
300	F.L. KING	706-1070



SCALE 1"=300'

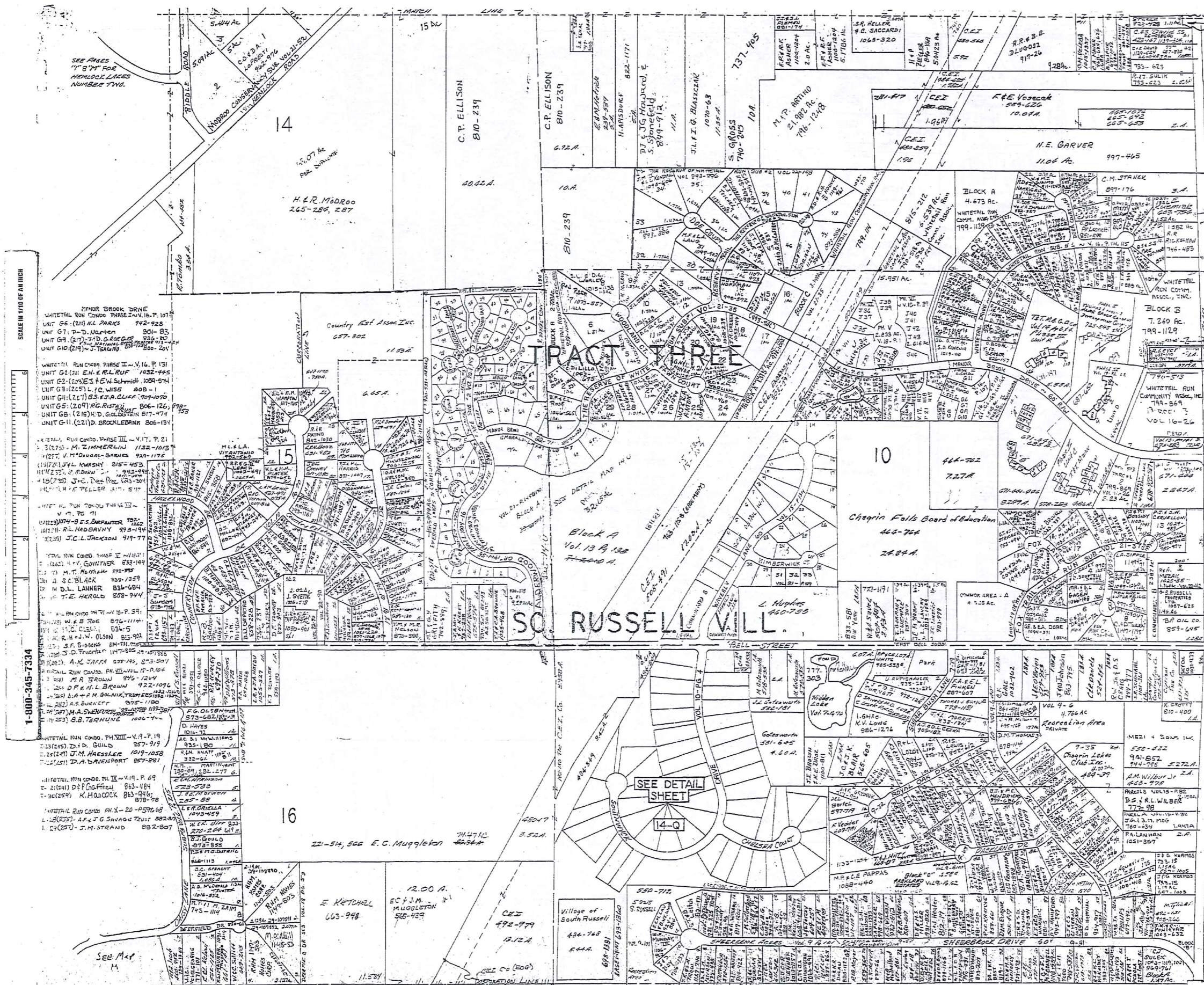
440

A	B	C	D
E	F	G	H
I	J	K	L
M	N	O	P

RUSSELL - M
RELATIVE REPRESENTATION

SEE MAP N

1. G.M. CONLEY 834-1052 - TRADUPLICATE 70 AC - DEED - 699AC
 2. BARRISGALL 757-312 - 1239 AC - 784-581
 3. E.M. GRANTY 756-1142 - (FRONTAGE - 3125) DEED - 45 AC - TAX DUPLICATE - 254 AC - 1021-24



SCALE IN 1/16 OF AN INCH

1-800-345-7334

MANOR BROOK DRIVE
 WHITETHAL RUN CONDO PHASE I V.16, P. 107
 UNIT G6 (21) M. PARKS 942-928
 UNIT G7 (2) D. NORTON 801-83
 UNIT G9 (2) T.D. CROGG 826-80
 UNIT G10 (2) J. TAYLOR 800-207

WHITETHAL RUN CONDO PHASE II V.16, P. 131
 UNIT G1 (2) E.M. RUF 1032-495
 UNIT G2 (2) S.F. SCHMIDT 1034-574
 UNIT G3 (2) S.L. WISE 808-1
 UNIT G4 (2) J.A. CLAR 709-1070
 UNIT G5 (2) R.C. RATAJ 806-124
 UNIT G6 (2) H.D. GILBERT 817-474
 UNIT G7 (2) D. BROCKLEMAN 806-134

WHITETHAL RUN CONDO PHASE III V.17, P. 21
 UNIT G1 (2) M. ZIMMERMAN 1132-1013
 UNIT G2 (2) V.M. DUGAN-SARLES 928-1178
 UNIT G3 (2) J.L. KWASNY 815-453
 UNIT G4 (2) S. ADAMS 943-498
 UNIT G5 (2) J.C. DEE 813-304
 UNIT G6 (2) M. PELLER 811-517

WHITETHAL RUN CONDO PHASE IV V.17, P. 21
 UNIT G1 (2) H.V. GUNTHER 832-149
 UNIT G2 (2) M.T. MATHIAS 832-383
 UNIT G3 (2) S.C. BLACK 837-1357
 UNIT G4 (2) M.D.L. LANNER 836-084
 UNIT G5 (2) T.E. HEROLD 808-944

WHITETHAL RUN CONDO PHASE V V.19, P. 19
 UNIT G1 (2) D.P. GUILD 857-919
 UNIT G2 (2) J.M. HESSLER 1019-1038
 UNIT G3 (2) D.A. BARNHART 857-881

WHITETHAL RUN CONDO PHASE VI V.19, P. 69
 UNIT G1 (2) D.P. GUILD 863-484
 UNIT G2 (2) K. HANCOCK 863-946
 UNIT G3 (2) J.M. STRAND 882-807

SCALE 1"=300'
 JAN. 1, 1998

Vol 13 - 4, 92
 Manor Brook Garden
 Condominium I
 Unit No. 11-125 - A.S. O'NEILL 940-7349
 11-127 M. J. WILSON 824-704
 11-129 M. WELLSER 824-8775
 11-131 S.J. BRICKEL 105-1143

Vol 13 - 4, 92
 Manor Brook Garden
 Condominium Phase II
 Vol 13 - P141 678-288
 Unit C
 C1-101 S.M. MAGGIORE 888-622
 C1-102 S.P. CARROLL 888-622
 C1-103 S.P. CARROLL 888-622
 C1-104 M.J. WILSON 824-704
 C1-105 M.J. WILSON 824-704
 C1-106 M.J. WILSON 824-704
 C1-107 M.J. WILSON 824-704
 C1-108 M.J. WILSON 824-704
 C1-109 M.J. WILSON 824-704
 C1-110 M.J. WILSON 824-704
 C1-111 M.J. WILSON 824-704

Vol 14 - 60, 21
 Phase I
 Unit D
 D1-101 L.C. BARR 888-157
 D1-102 L.C. BARR 888-157
 D1-103 L.C. BARR 888-157
 D1-104 L.C. BARR 888-157
 D1-105 L.C. BARR 888-157
 D1-106 L.C. BARR 888-157
 D1-107 L.C. BARR 888-157
 D1-108 L.C. BARR 888-157
 D1-109 L.C. BARR 888-157
 D1-110 L.C. BARR 888-157
 D1-111 L.C. BARR 888-157

Vol 14 - 60, 21
 Phase II
 Unit E
 E1-101 L.C. BARR 888-157
 E1-102 L.C. BARR 888-157
 E1-103 L.C. BARR 888-157
 E1-104 L.C. BARR 888-157
 E1-105 L.C. BARR 888-157
 E1-106 L.C. BARR 888-157
 E1-107 L.C. BARR 888-157
 E1-108 L.C. BARR 888-157
 E1-109 L.C. BARR 888-157
 E1-110 L.C. BARR 888-157
 E1-111 L.C. BARR 888-157

Vol 14 - 60, 21
 Phase III
 Unit F
 F1-101 L.C. BARR 888-157
 F1-102 L.C. BARR 888-157
 F1-103 L.C. BARR 888-157
 F1-104 L.C. BARR 888-157
 F1-105 L.C. BARR 888-157
 F1-106 L.C. BARR 888-157
 F1-107 L.C. BARR 888-157
 F1-108 L.C. BARR 888-157
 F1-109 L.C. BARR 888-157
 F1-110 L.C. BARR 888-157
 F1-111 L.C. BARR 888-157

Vol 14 - 60, 21
 Phase IV
 Unit G
 G1-101 L.C. BARR 888-157
 G1-102 L.C. BARR 888-157
 G1-103 L.C. BARR 888-157
 G1-104 L.C. BARR 888-157
 G1-105 L.C. BARR 888-157
 G1-106 L.C. BARR 888-157
 G1-107 L.C. BARR 888-157
 G1-108 L.C. BARR 888-157
 G1-109 L.C. BARR 888-157
 G1-110 L.C. BARR 888-157
 G1-111 L.C. BARR 888-157

Vol 14 - 60, 21
 Phase V
 Unit H
 H1-101 L.C. BARR 888-157
 H1-102 L.C. BARR 888-157
 H1-103 L.C. BARR 888-157
 H1-104 L.C. BARR 888-157
 H1-105 L.C. BARR 888-157
 H1-106 L.C. BARR 888-157
 H1-107 L.C. BARR 888-157
 H1-108 L.C. BARR 888-157
 H1-109 L.C. BARR 888-157
 H1-110 L.C. BARR 888-157
 H1-111 L.C. BARR 888-157

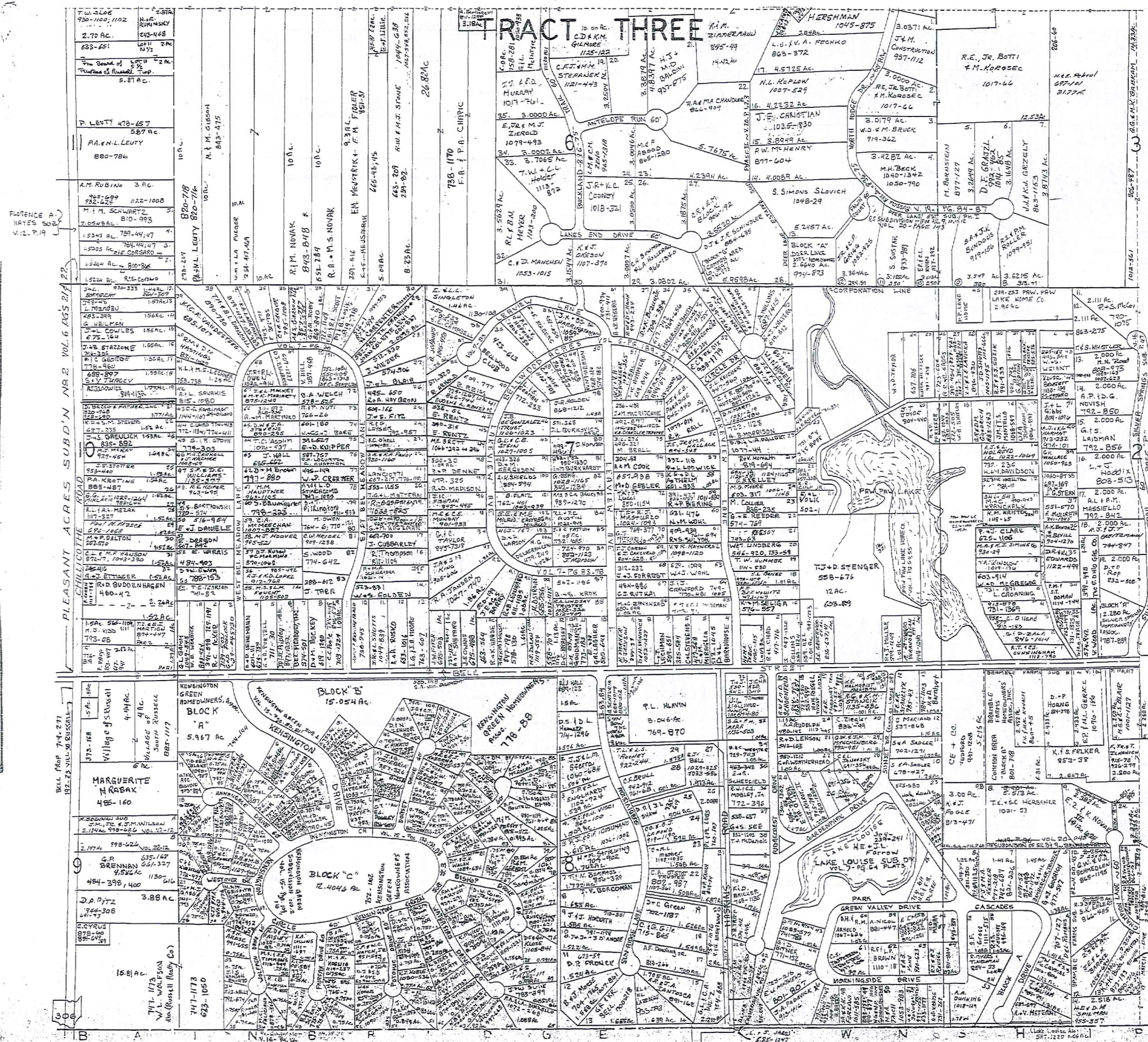
Vol 14 - 60, 21
 Phase VI
 Unit I
 I1-101 L.C. BARR 888-157
 I1-102 L.C. BARR 888-157
 I1-103 L.C. BARR 888-157
 I1-104 L.C. BARR 888-157
 I1-105 L.C. BARR 888-157
 I1-106 L.C. BARR 888-157
 I1-107 L.C. BARR 888-157
 I1-108 L.C. BARR 888-157
 I1-109 L.C. BARR 888-157
 I1-110 L.C. BARR 888-157
 I1-111 L.C. BARR 888-157

Vol 14 - 60, 21
 Phase VII
 Unit J
 J1-101 L.C. BARR 888-157
 J1-102 L.C. BARR 888-157
 J1-103 L.C. BARR 888-157
 J1-104 L.C. BARR 888-157
 J1-105 L.C. BARR 888-157
 J1-106 L.C. BARR 888-157
 J1-107 L.C. BARR 888-157
 J1-108 L.C. BARR 888-157
 J1-109 L.C. BARR 888-157
 J1-110 L.C. BARR 888-157
 J1-111 L.C. BARR 888-157

A	B	C	D
E	F	G	H
I	J	K	L
M	N	O	P

RUSSELL-N
 RELATIVE REPRESENTATION

1-800-345-7334



M.E. & J.L. FRANK VOL. 304 Pgs. 239-241
LAKE LOUISE
Subd. Vol. 7 Pg. 64

589	597	REV MATERNI
754	754	G.M. VASER
752	752	R.C. GAUBER
757	757	D.L. ROYAN
753	753	G.C. GOODRICH
752	752	G.A. BAMBERGER
752	752	M.C. KESLER 957-218
507	756	R.H. MILLS
842	284	H. BAKER 889-1379
10	478	S.R. & S. SADLER 677-949
11	702	S.A. Sadler
12	537	G. MARIANO 868-441
13	784	N.E. BARNHART
95	813-471	K.J. FOGLE

SCALE 1"=300'
JAN. 1, 1998

11	985	47	S.E. STANCZYK
12	578	228	A.K. MALMOQUIST
13	145	257	E.R. MURPHY TRUSTEES 997-387
14	535	326	M.M. RIEGEL
15	804	783	R.W. & M.D. SCHENFELD
20	480	142	REN RUDOLPH
21	502	165	RED LINDEN
22	506	1212	W.C. WATKINHEAD
23	484	46	LAKE LOUISE SUB
24	484	46	LAKE LOUISE SUB
25	501	168	S.E. HOLMES
26	501	168	S.E. HOLMES
27	100	200	L.T. J. HODGKIN
28	952	251	C.W. LTD. MYNCHENBERG
29	822	49	C. ZIEGLER
30	550	228	T.J. STONE
31	572	346	"
32	851	123	T.C. HERBERGER
33	720	703	A. WEBSTER
34	463	348	E. SCHENFELD
35	772	346	R.W. & S. MOSELEY JR.
36	538	437	D.G. & S. SCA
37	822	1232	T.S. MORRIS
38	702	438	"
39	574	412	K. TRIPP
40	914	149	D.L. & B. CAMPBELL
41	741	183	G.E. D. NORTON
42	771	132	G.E. D. NORTON
43	801	807	E.J. MATHEWS
44	725	225	J. COLEMAN
45	522	1249	H.L. BAKER 944-790
46	686	260	C. HANSON 833-448
47	410	377	W.A. GILMAN
48	520	447	A.G. SMITH
49	721	1777	M.B. & M. HANSON TRUSTEES
50	117	128	A.C. KEVIZE
51	117	128	A.C. KEVIZE
52	426	164	R.S. FEUCHT
53	862	1023	L.G. PAYNE
54	623	389	H.D. MARSA
55	226	502	E. GOTTSCHEK
56	881	447	A. NICOL
57	562	454	T.V. RIEHL
58	538	723	C.S. J. & S. W. TRUSTEES 1071-160
59	118	11	R.E. F. MOON
60	480	623	S.E. B. KOHN
61	754	1011	H.G. & R. D. REC
62	68		
63	68		
64	68		
65	68		
66	68		
67	68		
68	68		

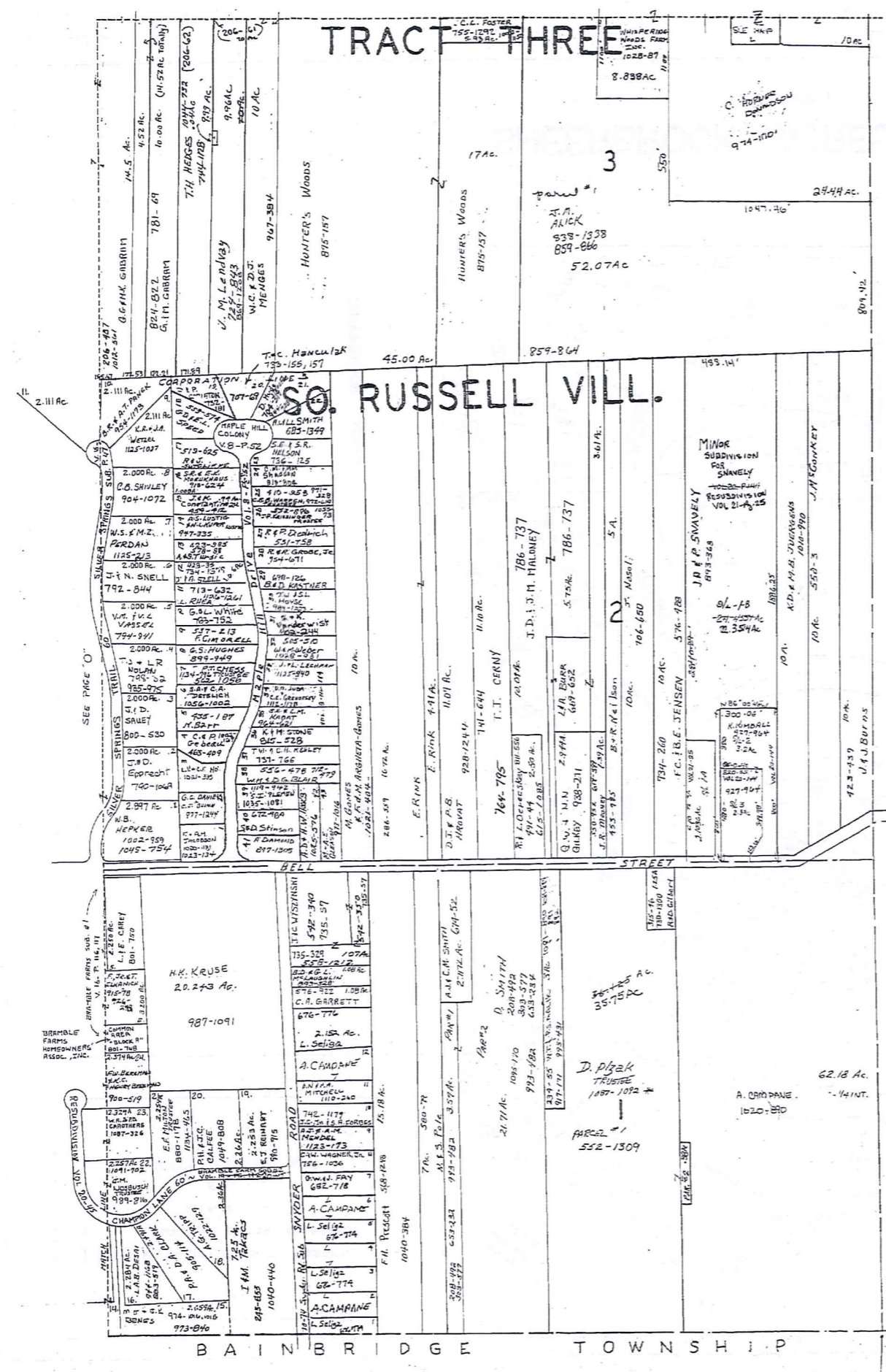
A	B	C	D
E	F	G	H
I	J	K	L
M	N	O	P

-RUSSELL-O

RELATIVE REPRESENTATION

1-800-345-7334

SCALE IN 1/10 OF AN INCH



N E W B U R Y T O W N S H I P

SCALE: 1" = 300'

* Inadequate description

A	B	C	D
E	F	G	H
I	J	K	L
M	N	O	P

RUSSELL - P
JANUARY 1, 1998
RELATIVE REPRESENTATION

VILLAGE OF SOUTH RUSSELL
WASTE WATER TREATMENT
PLANT SITE
5.440 A.
(0.29 A BAINBRIDGE TWP.)

SCALE IN 1/4 OF AN INCH
1-800-345-7334

BAINBRIDGE TOWNSHIP
RUSSELL TOWNSHIP

VOL. 9 - PG. 101

SHEERBROOK ACRES



VOL. 10 - PG. 4

SHEERBROOK ACRES NUMBER 2

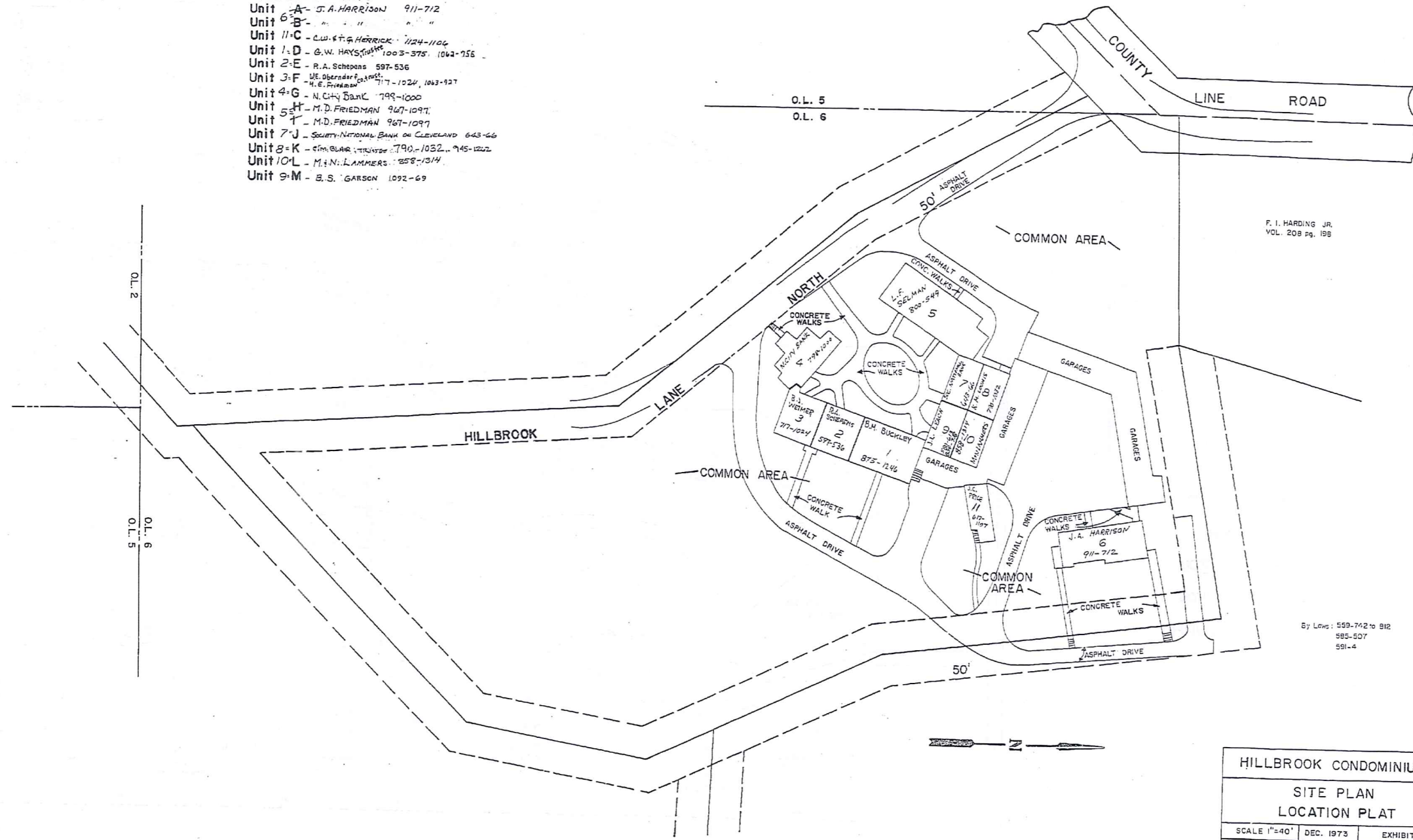
JAN. 1, 1992

RELATIVE REPRESENTATION 14-Q

AMENDED
HILLBROOK CONDOMINIUM

- VOL 20 - P119
 Unit A - J.A. HARRISON 911-712
 Unit B - " " " "
 Unit C - C.W. ST. G. HERRICK 1124-1104
 Unit D - G.W. HAYS 1003-375 1062-755
 Unit E - R.A. Schepans 597-536
 Unit F - J.E. Oberdorfer 717-1024, 1063-927
 Unit G - N. CHY BANK 799-1000
 Unit H - M.D. FRIEDMAN 967-1097
 Unit I - M.D. FRIEDMAN 967-1097
 Unit J - SOCIETY NATIONAL BANK OF CLEVELAND 643-66
 Unit K - SIMBLAR TRUSTEE 790-1032, 945-1022
 Unit L - M.J.N. LAMMERS 259-1314
 Unit M - B.S. GARSON 1092-69

SCALE IN 1/16 OF AN INCH
 1-800-345-7334



F. I. HARDING JR.
VOL. 208 pg. 198

By Laws: 599-742 to 812
595-507
591-4

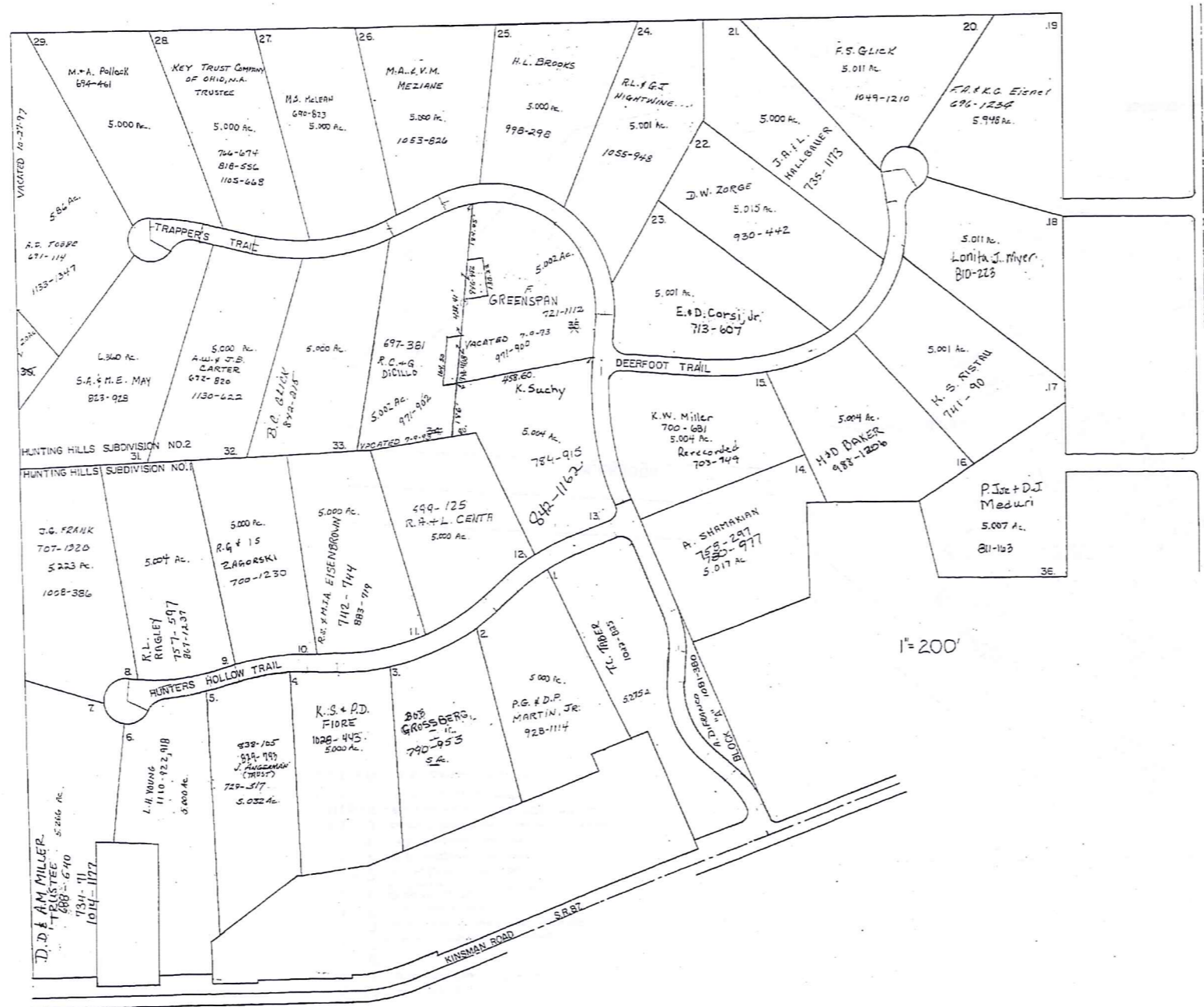
HILLBROOK CONDOMINIUM		
SITE PLAN		
LOCATION PLAT		
SCALE 1"=40'	DEC. 1973	EXHIBIT B
14 - R RUSSELL		

Recorded Vol. 10 pg. 39
AMENDED VOL20 - P119 8-11-92

JAN. 1, 1996

RELATIVE REPRESENTATION
* Inadequate description

SCALE IN 1/10 OF AN INCH
 1-800-345-7334



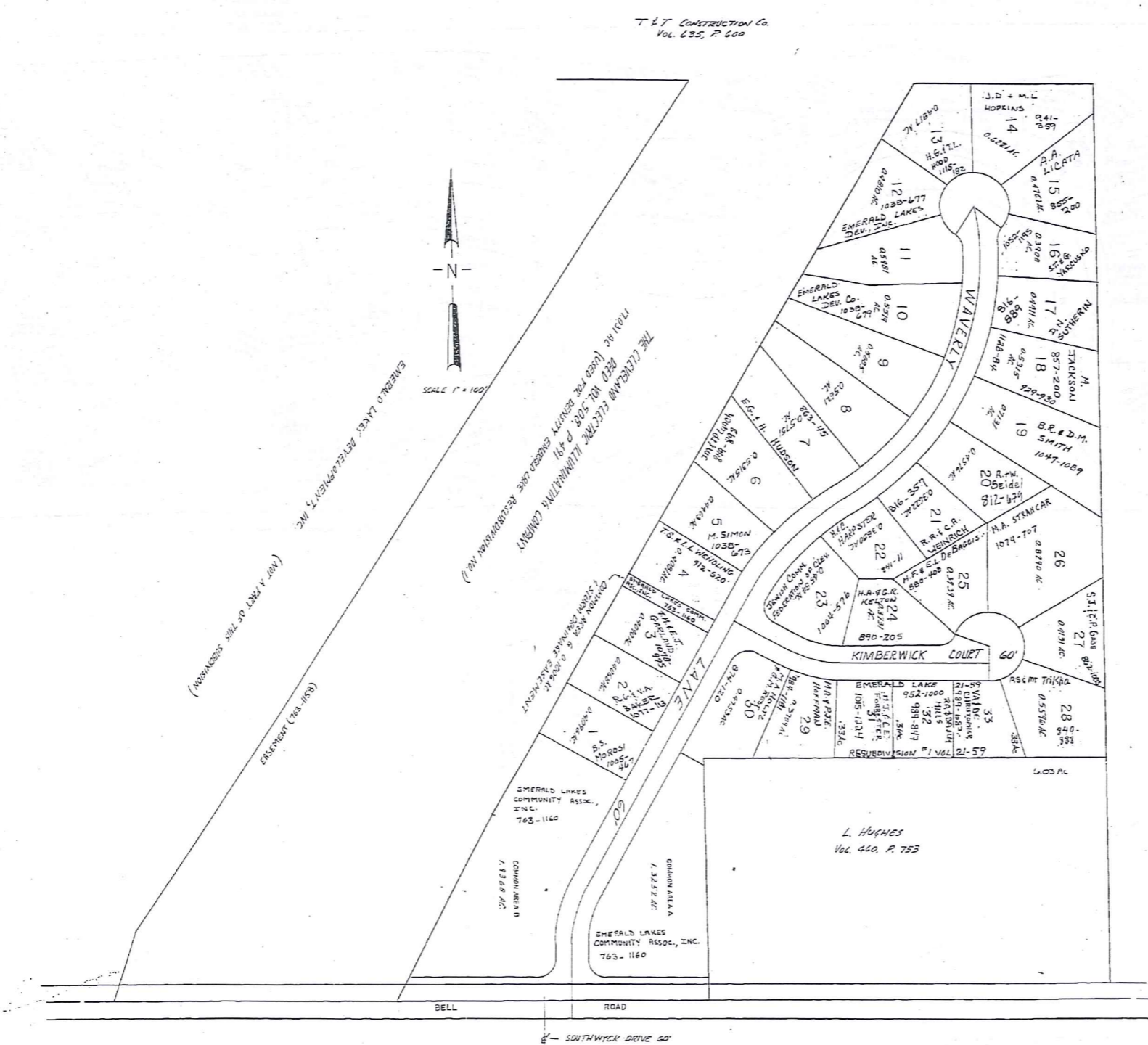
HUNTING HILLS SUBDIVISIONS. I.&2.
 no.1 vol. 14 pg. 1-2.
 no.2 vol. 14 pg. 17-19.
 JAN 1,
 HUNTING HILLS PROPERTIES, INC.

* Inadequate description

JANUARY 1, 1998
 RELATIVE REPRESENTATION

SCALE IN 1/16 OF AN INCH

1-800-345-7334



EMERALD LAKE
 SUBDIVISION NO. 1
 VOL. 15 - PG. 107, 108 &
 RESUBDIVISION NO. 1
 VOL. 15 - PG. 134, 135

1" = 100'

JANUARY 1, 1978

* Inadequate description

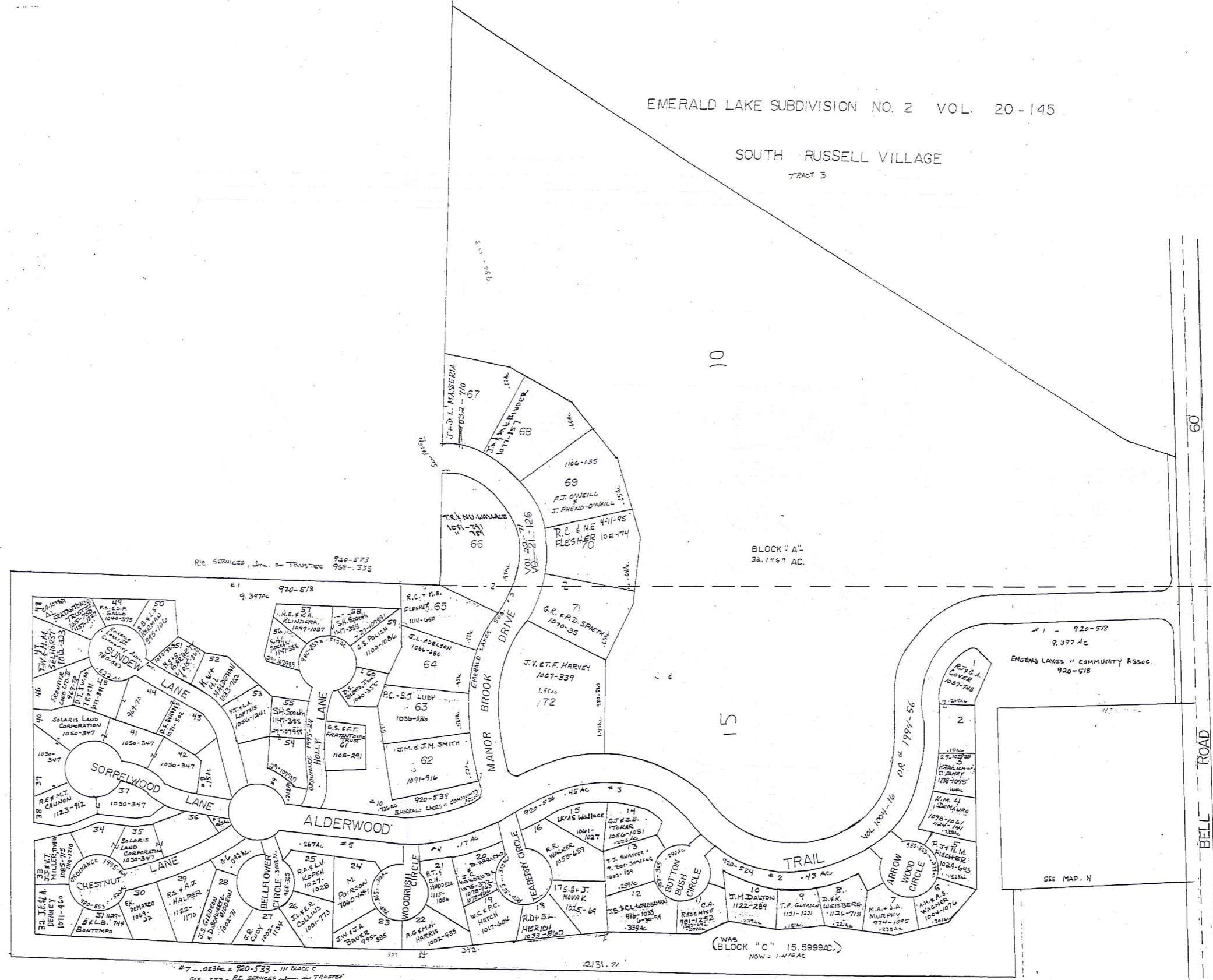
EMERALD LAKE SUBDIVISION NO. 2 VOL. 20-145

SOUTH RUSSELL VILLAGE

TRACT 3

SCALE IN 1/16" OF AN INCH

1-800-345-7334



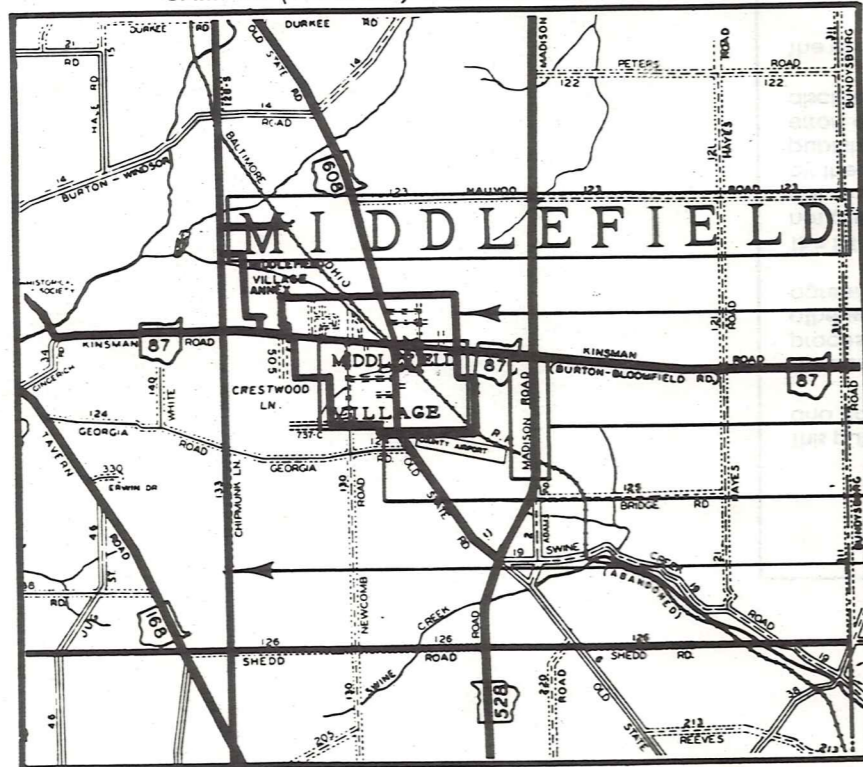
#7 - .083AC = 920-533 - IN BLOCK C
 #18 - 335 = RE SERVICES, INC. & TRUSTEE
 #19 - 361 = EMERALD LAKES DEV. INC.
 #29 - 365 = EMERALD LAKES II COMMUNITY ASSOC. INC.
 #32 - 353 = EMERALD LAKES II COMMUNITY ASSOC. INC.
 #33 - 365 = EMERALD LAKES II COMMUNITY ASSOC. INC.

SCALE 1" = 100' JANUARY 1, 1998
 RELATIVE REPRESENTATION
 CK. SUBDIVISION PLAT VOL. 20 - Pg. 145

Explanation and Use Sheet for Geauga County, Ohio

A

SAMPLE (PARTIAL) COUNTY INDEX MAP



Tract Lot Number

Acreage

Township Name

Village Boundary

Street Name

Village Name

Township Boundary

Owners Name

Denotes Continuous Ownership

Deed Book & Page

Map Page Number

Township Name

Village Name

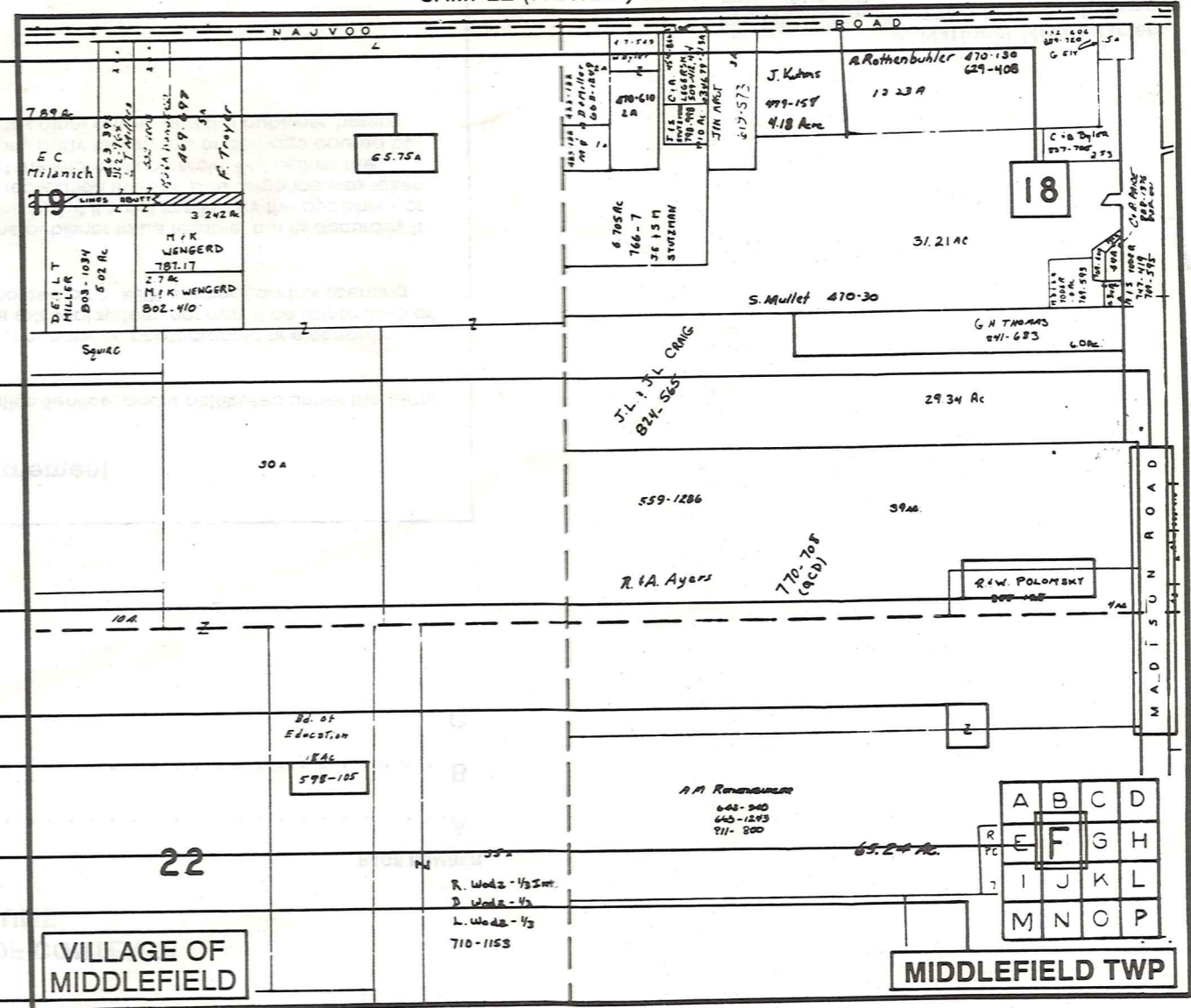
Village Boundary

Street Name

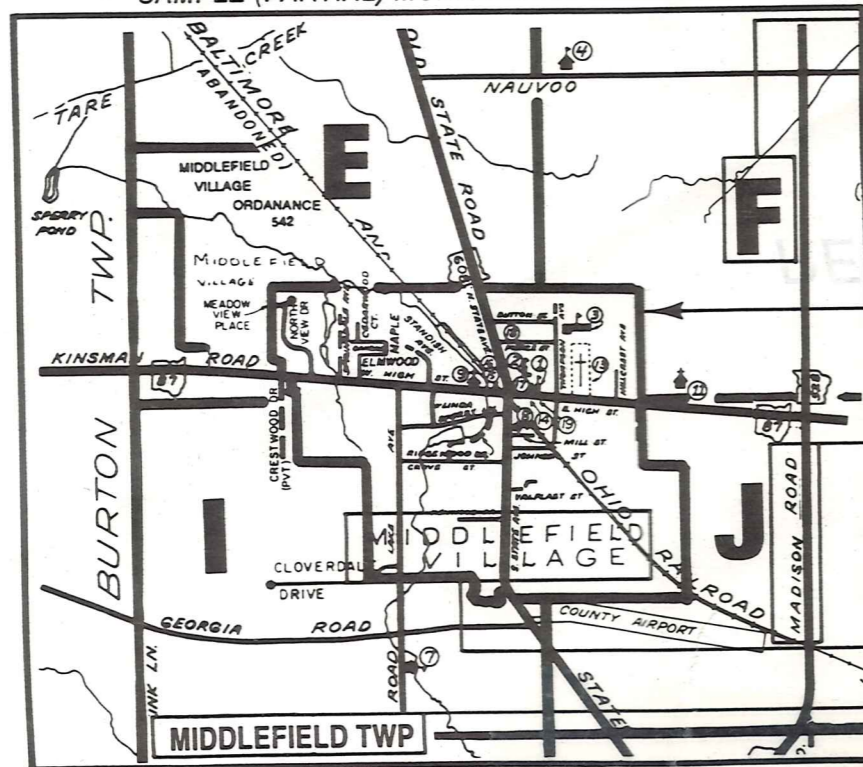
Village Name

Township Name

SAMPLE (PARTIAL) MAP PAGE



SAMPLE (PARTIAL) MUNICIPALITY INDEX MAP



USE OF THE MAP VOLUME

- LOCATE THE GENERAL AREA OF INTEREST ON THE COUNTY INDEX MAP AND NOTE THE MUNICIPALITY NAME (TOWNSHIP OR VILLAGE).
 - REFER TO THE TABLE OF CONTENTS AND NOTE THE BEGINNING ATLAS PAGE NUMBER FOR THE MUNICIPALITY OF INTEREST.
 - TURN TO THE PAGE INDICATED, ON THIS PAGE WILL APPEAR AN INDEX MAP FOR THAT MUNICIPALITY.
 - LOCATE THE GENERAL AREA OF INTEREST AND NOTE THE MAP PAGE NUMBER. THIS MAY BE EITHER A LETTER OR A NUMBER.
 - MAP PAGES ARE IN ALPHABETICAL (OR NUMERICAL) SEQUENCE FOLLOWING THE MUNICIPALITY INDEX MAP. FOLLOW SEQUENCE TO THE MAP PAGE INDICATED.
 - LOCATE SPECIFIC PARCEL OF INTEREST AND NOTE THE DESIRED INFORMATION.
- NOTE: ON SOME MAPS YOU MAY BE REFERRED TO A DETAIL SHEET SHOWING AN ENLARGEMENT OF THE AREA. THESE MAPS ARE FOUND AT THE END OF THE REGULAR MAP PAGES IN EACH MUNICIPALITY IN EITHER ALPHABETICAL OR NUMERICAL SEQUENCE.
- NOTE: CHARDON VILLAGE HAS TITLE SHEETS. TO LOCATE OWNERS NAME, NOTE THE PARCEL NUMBER, REFER TO THE TITLE PAGE FOLLOWING THE MAP OF INTEREST, FOLLOW NUMERICAL SEQUENCE TO THE PARCEL NUMBER OF INTEREST AND NOTE THE DESIRED INFORMATION. IN ALL OTHER MUNICIPALITIES THE OWNERS NAME APPEARS ON THE MAP PAGE.